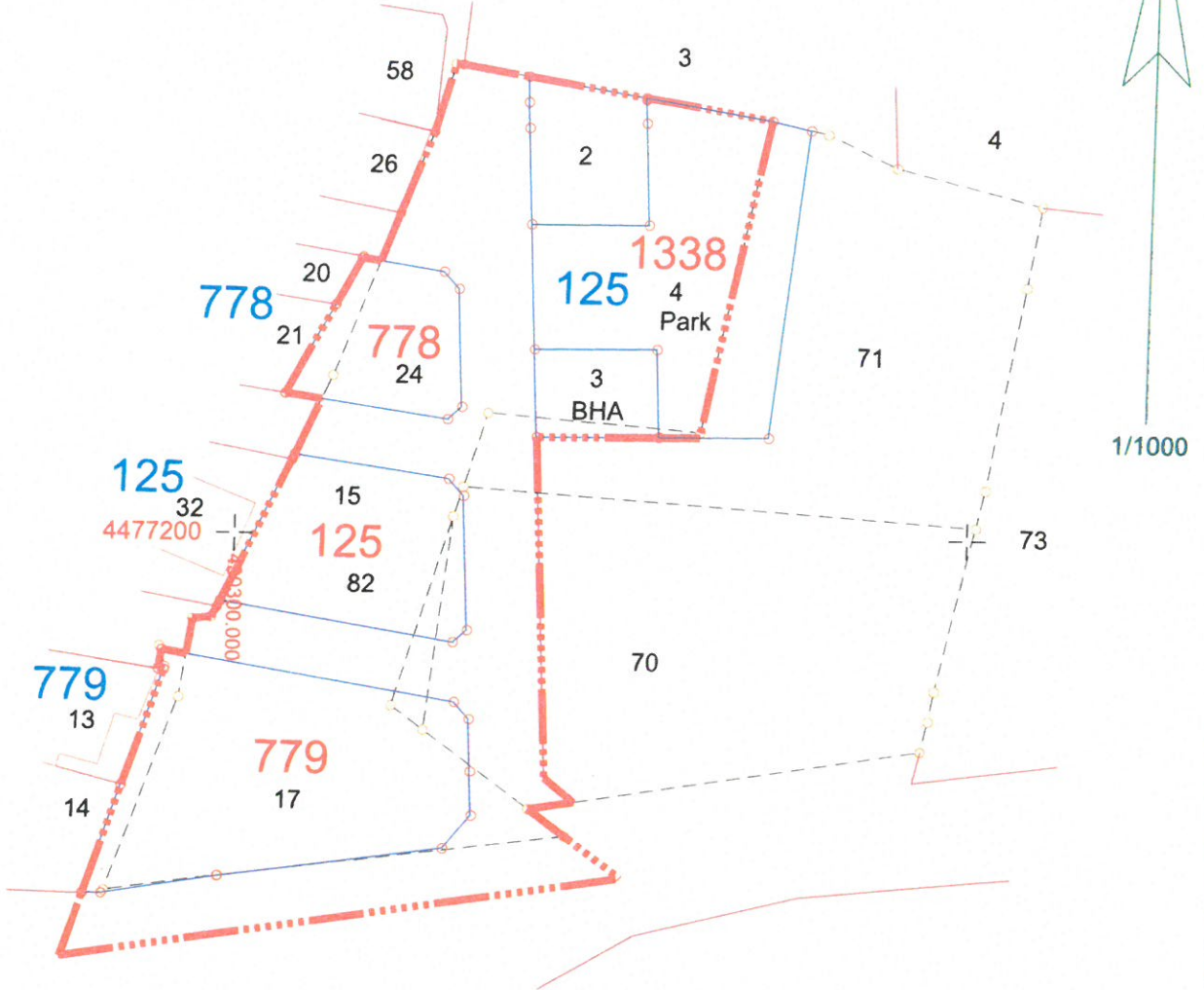


HAMİDİYE MAHALLESİ DÜZENLEME SINIR KROKİSİ

4477300 +
Hamidiye Mh. 125 Ada (eski) - 15, 70 ve 71 parçelerde
Geridönüşüm ve 18. Madde Uygulaması



Astıya Geçir Tarihi : 24/12/2021
Astıdan İnş Tarihi : 24/01/2022

4477100 +
430300

+
430400

	DÜZENLEYEN	UYGUNDUR		KADASTRO MÜDÜRLÜĞÜ
		BELEDİYE/ÖZEL İDARE/PROJE İDARESİ		
		KONTROL EDEN	ONAYLAYAN	KONTROL EDEN
ADI SOYADI	Cengiz KARAKUŞ			
TARİH				
İMZA				

HAMİDİYE MAHALLESİ DÜZENLEME SINIR KROKİSİ

MEVCUT PLAN

BELEDİYE HİZMET ALANI
VE KAMYON PARKI

125 PARK

ESMİ KURUM ALANI
Tarih: 15.05.2010
Yeniden: 3.50m.
KAKS: 1.15
TAKS: 0.35

K.D.K.C.A.
H.max.=serbest

K.D.K.C.A.
H.max.=serbest

K.D.K.C.A.
H.max.=serbest

K.D.K.C.A.
H.max.=serbest



İLİ : BURSA
İLÇESİ : GEMLİK
KÖYÜ/MAHALLESİ: HAMİDİYE

T.C. GEMLİK

BELEDİYESİ

NOLU UYGULAMA SAHAŞI

SAYFA NO:1

ÖZET CETVELİ

KADASTRO

Ada/Par	Alan	EskiDop	EskiDopMik	Kamu.	Yola terk	D.Girmeyen	Dopal	Dopalma	Dop	İlave	Terk	İ.Tahsis	AdaNo	Alan
125/15	4287.00	-	-	-	-	-	4287.00	-	1929.15	-	-	2357.85	125	622.67
125/70	2578.64	0.04849902	131.44	-	414.94	2024.50	167.45	-	75.36	-	-	92.09	778	372.03
125/71	2213.49	0.04849902	112.82	-	-	2090.08	129.70	-	58.36	-	-	71.34	779	1226.36
													779	1226.36
													1338	300.22

KADASTRO TOPLAMLARI

Toplam Pay	Toplam Alan	Top Kamu	Toplam Y.Terk	Toplam D.Girmeyen	Toplam Dopal	Top. Düz. Giren	Toplam Tahsis	Toplam Alan
9079.13	9079.13	0.00	751.82	3794.04	4584.14	-	2062.86	2521.28

Düzenleme Ortaklık Payı Hesabı
Kamuya Ayrılan Alan= 4584.14 - 2521.28 = 2062.86
Düzenleme Ortaklık Payı = 2062.86 / 4584.14 = 0.4499998
GENGİZ HARİTA LTD. ŞTİ. NI For Windows

Cengiz KARAKUŞ
Müh.


TOPLAMLAN : 9079.13
TOPLAMPAY : 9079.13
TOPLAMKAMULAŞTIRMA : 0.00
TOP. DÜZENLE GİRMEYEN: 3794.04
TOP. DÜZENLEMİYEBİREN: 4545.82

M A L S A H İ P L E R İ V A R A Ş T I R M A
Ö Z E T F O R M U
(K A D A S T R P A R S E L İ N E S İ R A L I)

TOPLAMADA ALANI : 2521.28
OKATILIM ORANI : 0.0000000
D.O.PAYI ORANI : 0.4499998

SAYFA NO: 1

SNo	Syf	Adar/Par	Alan	Malik	Baba Adı	Hissesi	Pay	EDopo	EDopMik	Giren	Girmyn	Dop	I.Terk	Tahsis	I M A R			
															Adar/Par	Alan	Hisse	Açıklama (Kad)
1	-	125/15	4287.00	AYŞE BİLGİN	İLYAS	18	535.88	-	-	535.88	-	241.15	-	294.73	125/82	622.67	7783/62267	
															778/24	372.03	4650/37203	
															779/17	1226.36	15329/122636	
															1338/2	300.22	1710/30022	
2	-	125/15	4287.00	HAVA KAYA	İLYAS	18	535.88	-	-	535.88	-	241.15	-	294.73	125/82	622.67	7783/62267	
															778/24	372.03	4650/37203	
															779/17	1226.36	15329/122636	
															1338/2	300.22	1710/30022	
3	-	125/15	4287.00	MEVAÖZTÜRK	İLYAS	18	535.88	-	-	535.88	-	241.15	-	294.73	125/82	622.67	7783/62267	
															778/24	372.03	4650/37203	
															779/17	1226.36	15329/122636	
															1338/2	300.22	1710/30022	
4	-	125/15	4287.00	ÜMMİYEERGENÇ	İLYAS	18	535.88	-	-	535.88	-	241.14	-	294.74	125/82	622.67	7784/62267	
															778/24	372.03	4651/37203	
															779/17	1226.36	15330/122636	
															1338/2	300.22	1710/30022	
5	-	125/15	4287.00	ABDULLAHAKÇAY	İLYAS	18	535.87	-	-	535.87	-	241.14	-	294.73	125/82	622.67	7783/62267	
															778/24	372.03	4650/37203	
															779/17	1226.36	15329/122636	
															1338/2	300.22	1710/30022	
6	-	125/15	4287.00	İSMAIL AKÇAY	İLYAS	18	535.87	-	-	535.87	-	241.14	-	294.73	125/82	622.67	7783/62267	
															778/24	372.03	4650/37203	
															779/17	1226.36	15329/122636	
															1338/2	300.22	1710/30022	
7	-	125/15	4287.00	SEYFİ AKÇAY	İLYAS	18	535.87	-	-	535.87	-	241.14	-	294.73	125/82	622.67	7783/62267	
															778/24	372.03	4650/37203	
															779/17	1226.36	15329/122636	
															1338/2	300.22	1710/30022	
8	-	125/15	4287.00	FATMA TAYRAN	İLYAS	18	535.87	-	-	535.87	-	241.14	-	294.73	125/82	622.67	7783/62267	
															778/24	372.03	4650/37203	
															779/17	1226.36	15329/122636	
															1338/2	300.22	1710/30022	
9	-	125/70	2578.64	GEMLİK BELEDİYESİ		TAM	2578.64	0.04849	131.44	165.00	2024.52	74.25	-	90.75	125/82	622.67	7783/62267	
															778/24	372.03	4650/37203	
															779/17	1226.36	15329/122636	
															1338/2	300.22	1710/30022	
10	-	125/71	2213.49	GEMLİK BELEDİYESİ		TAM	2213.49	0.04849	112.82	132.14	2090.08	59.46	-	72.68	125/82	622.67	7783/62267	
															778/24	372.03	4650/37203	
															779/17	1226.36	15329/122636	
															1338/2	300.22	1710/30022	
															9075/30022	300.22	9075/30022	
															7268/30022	300.22	7268/30022	

Geniz KARACUŞ
Hr. m.Şh.


S.No	Sf.	AdarPar	Alan	Malik	Baba Adı	Hissesi	Pay	E.Dopo	EDoptMik	Giren	Girmyın	Dop	Tahsis	Y.Terk	AdarPar	Alan	Hisse	I M A R		
																		Acıklama (İmar)	Cinsi	SAYFA NO 1
1	125/15	4287.00	AYŞE BİLGİN	İLYAS	1/8	535.88	-	-	-	535.88	-	241.15	294.73	-	125/82	622.67	7783/62267			
2	125/15	4287.00	HAVA KAYA	İLYAS	1/8	535.88	-	-	-	535.88	-	241.15	294.73	-	-	-	7783/62267			
3	125/15	4287.00	MEVAÖZTÜRK	İLYAS	1/8	535.88	-	-	-	535.88	-	241.15	294.73	-	-	-	7783/62267			
4	125/15	4287.00	ÜMMİYEERGENÇ	İLYAS	1/8	535.88	-	-	-	535.88	-	241.14	294.74	-	-	-	7784/62267			
5	125/15	4287.00	ABDULLAHAKÇAY	İLYAS	1/8	535.87	-	-	-	535.87	-	241.14	294.73	-	-	-	7783/62267			
6	125/15	4287.00	İSMAIL AKÇAY	İLYAS	1/8	535.87	-	-	-	535.87	-	241.14	294.73	-	-	-	7783/62267			
7	125/15	4287.00	SEYFİ AKÇAY	İLYAS	1/8	535.87	-	-	-	535.87	-	241.14	294.73	-	-	-	7783/62267			
8	125/15	4287.00	FATMA TAYRAN	İLYAS	1/8	535.87	-	-	-	535.87	-	241.14	294.73	-	-	-	7783/62267			
1	125/15	4287.00	AYŞE BİLGİN	İLYAS	1/8	535.88	-	-	-	535.88	-	241.15	294.73	-	778/24	372.03	4650/37203			
2	125/15	4287.00	HAVA KAYA	İLYAS	1/8	535.88	-	-	-	535.88	-	241.15	294.73	-	-	-	4650/37203			
3	125/15	4287.00	MEVAÖZTÜRK	İLYAS	1/8	535.88	-	-	-	535.88	-	241.15	294.73	-	-	-	4650/37203			
4	125/15	4287.00	ÜMMİYEERGENÇ	İLYAS	1/8	535.88	-	-	-	535.88	-	241.14	294.74	-	-	-	4651/37203			
5	125/15	4287.00	ABDULLAHAKÇAY	İLYAS	1/8	535.87	-	-	-	535.87	-	241.14	294.73	-	-	-	4650/37203			
6	125/15	4287.00	İSMAIL AKÇAY	İLYAS	1/8	535.87	-	-	-	535.87	-	241.14	294.73	-	-	-	4650/37203			
7	125/15	4287.00	SEYFİ AKÇAY	İLYAS	1/8	535.87	-	-	-	535.87	-	241.14	294.73	-	-	-	4650/37203			
8	125/15	4287.00	FATMA TAYRAN	İLYAS	1/8	535.87	-	-	-	535.87	-	241.14	294.73	-	-	-	4650/37203			
1	125/15	4287.00	AYŞE BİLGİN	İLYAS	1/8	535.88	-	-	-	535.88	-	241.15	294.73	-	779/17	1226.36	15329/122636			
2	125/15	4287.00	HAVA KAYA	İLYAS	1/8	535.88	-	-	-	535.88	-	241.15	294.73	-	-	-	15329/122636			
3	125/15	4287.00	MEVAÖZTÜRK	İLYAS	1/8	535.88	-	-	-	535.88	-	241.15	294.73	-	-	-	15329/122636			
4	125/15	4287.00	ÜMMİYEERGENÇ	İLYAS	1/8	535.88	-	-	-	535.88	-	241.14	294.74	-	-	-	15330/122636			
5	125/15	4287.00	ABDULLAHAKÇAY	İLYAS	1/8	535.87	-	-	-	535.87	-	241.14	294.73	-	-	-	15329/122636			
6	125/15	4287.00	İSMAIL AKÇAY	İLYAS	1/8	535.87	-	-	-	535.87	-	241.14	294.73	-	-	-	15329/122636			
7	125/15	4287.00	SEYFİ AKÇAY	İLYAS	1/8	535.87	-	-	-	535.87	-	241.14	294.73	-	-	-	15329/122636			
8	125/15	4287.00	FATMA TAYRAN	İLYAS	1/8	535.87	-	-	-	535.87	-	241.14	294.73	-	-	-	15329/122636			
1	125/15	4287.00	AYŞE BİLGİN	İLYAS	1/8	535.88	-	-	-	535.88	-	241.15	294.73	-	1338/2	300.22	1710/30022			
2	125/15	4287.00	HAVA KAYA	İLYAS	1/8	535.88	-	-	-	535.88	-	241.15	294.73	-	-	-	1710/30022			
3	125/15	4287.00	MEVAÖZTÜRK	İLYAS	1/8	535.88	-	-	-	535.88	-	241.15	294.73	-	-	-	1710/30022			
4	125/15	4287.00	ÜMMİYEERGENÇ	İLYAS	1/8	535.88	-	-	-	535.88	-	241.14	294.74	-	-	-	1710/30022			
5	125/15	4287.00	ABDULLAHAKÇAY	İLYAS	1/8	535.87	-	-	-	535.87	-	241.14	294.73	-	-	-	1710/30022			
6	125/15	4287.00	İSMAIL AKÇAY	İLYAS	1/8	535.87	-	-	-	535.87	-	241.14	294.73	-	-	-	1710/30022			
7	125/15	4287.00	SEYFİ AKÇAY	İLYAS	1/8	535.87	-	-	-	535.87	-	241.14	294.73	-	-	-	1710/30022			
8	125/15	4287.00	FATMA TAYRAN	İLYAS	1/8	535.87	-	-	-	535.87	-	241.14	294.73	-	-	-	1710/30022			
9	125/70	2578.64	GEMLİK BELEDİYESİ		TAM	2578.64	0.0484990	131.44	-	167.45	2024.50	75.36	92.09	414.94	-	-	9209/30022			
10	125/71	2213.49	GEMLİK BELEDİYESİ		TAM	2213.49	0.0484990	112.82	-	129.70	2090.08	58.36	71.34	-	-	-	7134/30022			
	DOP		GEMLİK BELEDİYESİ												1338/2	200.60			Belediye hizmet alanı	

Gençler KARACIUS
 Hft. Müh.